



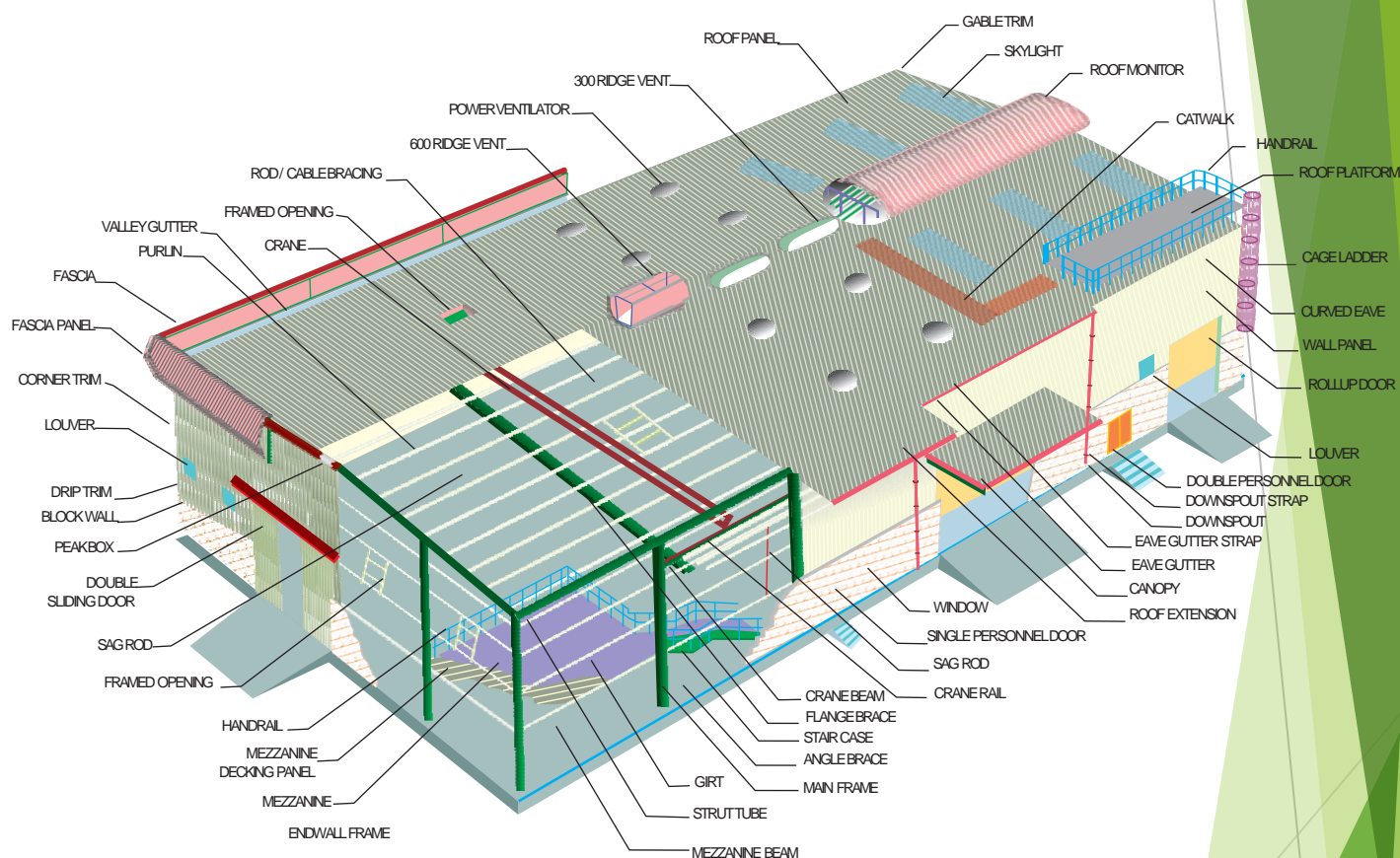
Plot No. 130, Phase- III, Sector - 9, IMT Bawal, Rewari, Haryana -123501

Web: www.ati-projects.com, Mail: info@ati-projects.com +911284296077 Cell: +919812025567



Alpine Tech Industries Pvt. Ltd. Metal buildings are tailor-made solutions to customer needs and requirements. A typical PEB comprises of Primary & Secondary Membranes, Roof & Wall Claddings, choice of Thermal & Acoustic Insulations, choice of Mezzanine Floors, Crane Beams and integrated accessories.

PEB Elements



Plot No. 130, Phase- III, Sector - 9, IMT Bawal, Rewari, Haryana -123501

Web: www.ati-projects.com, Mail: info@ati-projects.com +911284296077 Cell: +919812025567



About:-

M/s Alpine Tech Industries Pvt. Ltd take pleasure in introducing ourselves as manufacturers of **Turnkey Projects**, engineering goods & Pipe Line works with harnessing technology initiative for maximum efficiency and achieving greater customer satisfaction. Alpine Engineers is Founder of M/S Alpine Tech Industries Pvt. Ltd. established in the year of 2008, has reached to a Company, covered a special space for itself in considerably short span of time. Survive in this competitive arena, we make sure, our Projects are competitively priced and are delivered to the clients well within stipulated time frame.

Warehousing has been formed to address the needs of various services for the **growing warehousing industry in India**. We are integrating new technologies to support applications which in turn give way to better user experiences and **help in streamlining the existing models**. However integrating technologies is not enough, that is why, we have also included traditional warehousing practices in our services (Land Acquisition, Compliances, Design, Construction, Leasing and including our Data Integrated Warehousing practices), **these services make us your one stop solution for all your warehousing needs and one of the Pioneer Turnkey Projects Development companies in India**. Since our Inception in 2009, we have striven for 'Success' in all fields pertaining to the Turnkey Projects and we continue to promote 'ATTI' in all aspects of Life.

Mission

To be a world-class leader in our business and achieve global standards through quality and innovation. We are committed to bring value and higher durability of our product our clients and associates in achieving better standards of excellence by overcoming challenges with zeal and confidence. To become one of the leading engineering companies in the world with a foundation built on quality, safety, innovation and cost competitiveness. To establish a culture of innovation, self-motivation and ownership towards work. To provide cost-effective and quality solutions for our clients. To strive to achieve better standards of quality and excellence in any ecosystem. Foster team bonding and encourage employees to embrace new ideas, and build HR processes for nurturing skills and capabilities.

Plot No. 130, Phase- III, Sector - 9, IMT Bawal, Rewari, Haryana -123501

Web: www.ati-projects.com, Mail: info@ati-projects.com +911284296077 Cell: +919812025567



➤ Strength

M/S Alpine Tech Industries (P) Limited, on the way to established a system to achieve their goals by technology & Manpower.

- | | | |
|-----|-------------------------------|----------------|
| 1. | CNC Plasma Cutting Machine | - (12 & 50 mm) |
| 2. | Submerged Arc Welding Machine | - 01 |
| 3. | Power Backup (Gen Set 63 KVA) | - 01 |
| 4. | Air Line at 9 Kg Pressure | - 01 |
| 5. | CNC Machine (Break Press) | - 01 |
| 6. | Flame Cutting Machine | - 01 |
| 7. | Hand Plasma Machine | - 01 |
| 8. | Surface Grinder 8 Inch | - 01 |
| 9. | Mig. Welding Machine | - 07 |
| 10. | Welding Machine | - 12 |
| 11. | Other Machine | - 25 |
| 12. | CNC Machine (Break Press) | - 01 |

Plot No. 130, Phase- III, Sector - 9, IMT Bawal, Rewari, Haryana -123501

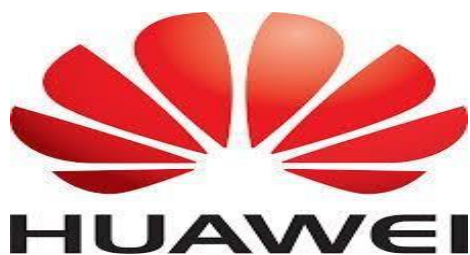
Web: www.ati-projects.com, Mail: info@ati-projects.com +911284296077 Cell: +919812025567



Our Clients:-



Jones Lang LaSalle



Plot No. 130, Phase- III, Sector - 9, IMT Bawal, Rewari, Haryana -123501

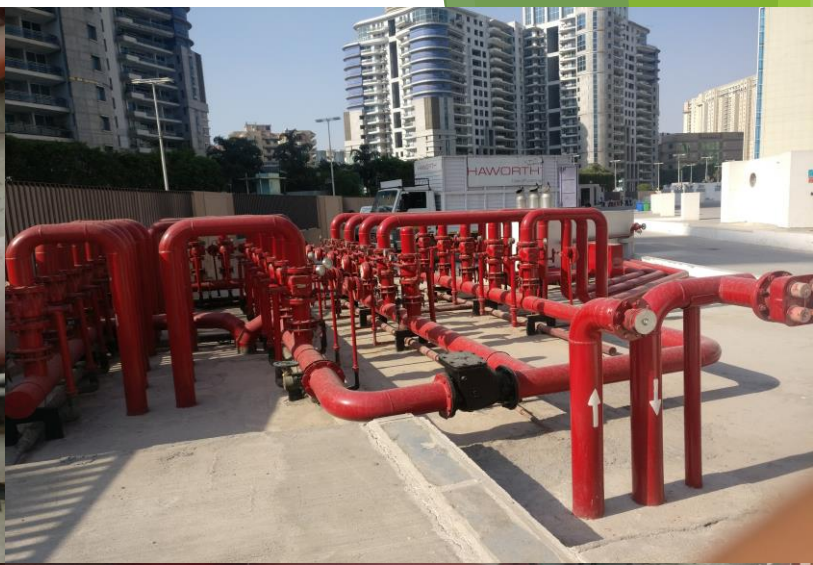
Web: www.ati-projects.com, Mail: info@ati-projects.com +911284296077 Cell: +919812025567

FEW PIC OF WORKS:-



Plot No. 130, Phase- III, Sector - 9, IMT Bawal, Rewari, Haryana -123501

Web: www.ati-projects.com, Mail: info@ati-projects.com +911284296077 Cell: +919812025567





Plot No. 130, Phase- III, Sector - 9, IMT Bawal, Rewari, Haryana -123501

Web: www.ati-projects.com, Mail: info@ati-projects.com +911284296077 Cell: +919812025567



*For Our Past performance please visit our
web Portal
www.ati-projects.com
Thanks & welcome Yours*

Plot No. 130, Phase- III, Sector - 9, IMT Bawal, Rewari, Haryana -123501

Web: www.ati-projects.com, Mail: info@ati-projects.com +911284296077 Cell: +919812025567